

**RALLY
OBEDIENCE
TRIAL
RULES &
REGULATIONS**

Effective January 1, 2007



CANADIAN KENNEL CLUB

CLUB CANIN CANADIEN

PURPOSE

The purpose of Rally Obedience is to demonstrate a dog's usefulness as a companion of mankind, not merely the dog's ability to follow specified routines in the ring. Dogs who participate in rally are dogs that have been trained and conditioned to behave in the home, in public places, and in the presence of other dogs.

The chief objective of rally is to provide a fast-moving and motivational activity that demonstrates a handler and dog's competency in basic obedience exercises without requiring exact precision for success. Dogs in rally events should demonstrate willingness and enjoyment. To that end, handlers may use praise, encouragement, and petting throughout the rally course.

All participants in the rally classes are required to perform the same exercises in substantially the same way so that the quality of the various performances may be compared and scored.

TABLE OF CONTENTS

1	INTERPRETATIONS	
1.1	Definitions.....	1
1.2	Rally Obedience Defined & Classified	3
2	GENERAL RULES & REGULATIONS	
2.1	Eligibility of Clubs to Hold Rally Trials	3
2.2	Making Application	3
2.3	CKC Publications	4
2.4	Advertising	4
2.5	Officials & Committees	5
2.6	Ring Stewards	5
2.7	Veterinarian	8
3	JUDGES	
3.1	Application for Approval of Judges	8
3.2	Judge's Eligibility	9
3.3	Contract Between a Club and a Judge	9
3.4	Judges Entering or Handling Dogs.....	10
3.5	Indignities to a Judge	10
3.6	Judge's Conduct	10
4	PREMIUM LIST, CATALOGUE & JUDGING SCHEDULE	
4.1	Premium List	11
4.2	Catalogue	13
4.3	Judging Schedule	14
5	RIBBONS & PRIZES	
5.1	Ribbons & Prizes	16
6	ENTRIES & END OF TRIAL	
6.1	Entry Requirements.....	17
6.2	Entry Forms	20
6.3	Entry Fees	20
6.4	Dogs Must Compete	21
6.5	Bitches In Season	21
6.6	Health	21
6.7	Moving Up	22
6.8	End of the Trial	22

7	UNSPORTSMANLIKE CONDUCT	23
8	REGULATIONS FOR PERFORMANCE & JUDGING	
8.1	Judging Standard	24
8.2	Disqualification & Reinstatement of a Dog	24
8.3	Handler with Disabilities	25
8.4	Qualifying Performance	26
8.5	Judge's Orders & Signals	26
8.6	Catalogue Order	26
8.7	Judge's Book	27
8.8	Re-Judging	27
8.9	Ties	27
8.10	Scores	27
8.11	Scoring (All Classes)	27
8.12	Timing	28
8.13	Ring Procedure	28
8.14	Commands & Signals	29
8.15	Praise, Food & Petting	29
8.16	Leash & Collar	30
8.17	Heel Position	30
8.18	Rings & Equipment	30
9	RALLY NOVICE CLASS R.N.	
9.1	Rally Novice A.....	32
9.2	Rally Novice B.....	32
10	RALLY ADVANCED CLASS R.A.	
10.1	Rally Advanced A	33
10.2	Rally Advanced B	33
11	RALLY EXCELLENT CLASS R.E.	
11.1	Rally Excellent A	34
11.2	Rally Excellent B	34
12	RALLY ADVANCED EXCELLENT TITLE R.A.E.	35
13	EXHIBITION ONLY CLASS	
13.1	Exhibition Only	36
14	SANCTIONED RALLY OBEDIENCE MATCHES	36
15	PROTESTS	38

16	COMPLAINTS	39
17	DISCIPLINE	40
18	PROCEDURE FOR CONDUCTING A RALLY OBEDIENCE TRIAL COMMITTEE HEARING	42
19	PARTICIPATION	43
20	NO LIABILITY	44
21	AMENDMENTS	44
APPENDICES		
A	SAMPLE MARKED JUDGE'S BOOK	46
B	SIGNS & EXPLANATIONS	47

1 INTERPRETATIONS

1.1 Definitions

For the purpose of these rules and regulations, the following interpretations shall apply:

“**breed**” includes a breed that is accepted by a CKC recognized foreign stud book or by an association incorporated under the Animal Pedigree Act other than the CKC

“**Board**” means the Board of Directors of The Canadian Kennel Club

“**CKC**” means The Canadian Kennel Club

“**Club**” means The Canadian Kennel Club

“**club**” means a club or association officially accredited by The Canadian Kennel Club to hold obedience trials

“**complainant**” means any person who has laid a charge or complaint against another person, partnership, company or organization relative to the contravention of these rules, regulations, procedures and policies of The Canadian Kennel Club

“**debar**” means to prohibit a person from participating in any competition or other activities directed, sanctioned, sponsored or authorized by The Canadian Kennel Club if held under its auspices or under any of its rules and regulations

“**defendant**” means any person, partnership, company or organization against whom a charge or complaint has been laid, relative to the contravention of these rules, regulations, procedures and policies of The Canadian Kennel Club

“**deprive of privileges**” means to deprive a non-member of all privileges accorded to non-members of The Canadian Kennel Club, including the use of the Head Office

“**dog**” means a purebred dog of either sex

“**exhibitor**” means the owner(s) or handler who enters a dog at a trial

“expel” means to terminate membership in The Canadian Kennel Club and depriving the person so expelled from all privileges of The Canadian Kennel Club

“good standing” means an individual who is not under suspension, deprivation, debarment or who has not forfeited his right to participate in any Canadian Kennel Club approved event.

“handler” means the person who handles a dog in the obedience trial

“Head Office” means the office at which the business of The Canadian Kennel Club is carried out on a regular ongoing basis

“immediate family” means spouse, father, mother, son, daughter, brother, sister, grandparents and significant other

“just cause” means how a reasonable person without personal bias or prejudice would act

“lame” means any condition which affects a dog’s locomotion. A dog with a withered or amputated limb is considered to be moving with unnatural locomotion

“listed breed” means a breed that is included in the Miscellaneous List and that is authorized to participate in CKC events in accordance with the rules and regulations governing those events

“owner” means the owner or owners as stated on the registration certificate of the dog

“recognized breed” means a breed that The Canadian Kennel Club is authorized to register in accordance with the Animal Pedigree Act

“suspend” means to deprive a member, for the period ordered, of all the privileges of The Canadian Kennel Club

“trainer” means any person who conducts or has conducted a dog obedience training class, or who regularly assists with the training of dogs in the class, or who regularly trains dogs belonging to a person outside his immediate family.

This rule book shall be read with all applicable changes in gender so that the masculine shall include the feminine and vice versa and the singular shall include the plural if applicable.

1.2 Rally Obedience Trials Defined & Classified

- 1.2.1 An approved rally obedience trial is a formal event given by a CKC accredited obedience club at which qualifying scores may be awarded towards a title.
- 1.2.2 A sanctioned rally obedience match is an informal event given by a CKC accredited obedience club at which dogs compete but not earn qualifying scores towards titles.
- 1.2.3 When an Obedience Trial or a Rally Obedience Trial is held in conjunction with a Conformation Show, the Conformation Show Rules, where applicable shall govern the conduct of these trials and shall apply to all dogs and persons participating in them, except as these Rules and Regulations may otherwise provide.

2 GENERAL RULES & REGULATIONS

2.1 Eligibility of Clubs to Hold Rally Trials

- 2.1.1 Only CKC clubs or associations accredited by the CKC to hold obedience trials that are in good standing with the CKC are eligible to apply for and hold Rally Obedience.
- 2.1.2 The rally trial must have the same format as the obedience trial; i.e. All-Breed, Group(s), or Breed Specialty.
- 2.1.3 Clubs in good standing with the CKC that are accredited to hold obedience trials, and wish to offer rally obedience trials, will be required to hold two (2) Rally Sanction Matches.
- 2.1.4 An Event Date application for an official trial may be submitted after completion of both sanction matches.
- 2.1.5 A club that has not held an approved obedience trial under CKC regulations within the past 3 years will be required to meet the Obedience rules for sanction matches as well as the requirements of section 2.1.3 and 2.1.4 for Rally.

2.2 Making Application

- 2.2.1 A club applying to hold a Rally trial must make application on forms provided by the CKC. The

Event Date Application must be submitted so as to be received not less than 180 days before the date of the proposed trial. The CKC will notify the club whether or not approval has been granted. If the date is granted and the club fails to hold its trial on the date approved, an administrative fee as set by the Board will be assessed against the club, unless the CKC waives this fee on the grounds that the club had no alternative but to postpone or cancel.

2.2.2 Only a club whose president, vice-president, secretary, treasurer and trial secretary are regular members in good standing with the CKC may make application for trial dates.

2.2.3 The CKC shall have the authority to grant or withhold approval of an application for trial dates. In the event approval is withheld, the trial-giving club shall have no claim against the CKC.

2.2.4 A club may hold a sanctioned rally obedience match by obtaining the authorization of the CKC. Sanctioned rally obedience matches shall be governed by the regulations contained in these rules and regulations. Scores attained at a sanctioned rally obedience match shall not be considered as “qualifying” or as a “leg” towards a title.

2.3 CKC Publications

2.3.1 All clubs holding Rally Obedience Trials are required to have the latest edition of the Rally Obedience Trial Rules & Regulations available at the trial.

2.4 Advertising

2.4.1 A club that has not been granted priority dates must not advertise or publish the date of any event that has not been approved by the CKC.

2.4.2 A club that has been granted priority dates for its event may advertise those dates prior to submitting the Event Date Application. This does not exempt the club from submitting the required applications to the CKC within the prescribed time frame.

2.4.3 A club must not advertise the names of the judges until the club has received official notification from the CKC that the judges have been approved.

2.5 Officials & Committees

- 2.5.1 Any club holding a rally obedience trial under these rules must name a trial secretary who must be a member in good standing with the CKC. The premium list for CKC approved rally obedience trials shall designate the trial secretary as the person who is to receive entries.
- 2.5.2 Only those persons in good standing with the CKC may act in any official capacity at a rally obedience trials.
- 2.5.3 When a rally obedience trial is not held in conjunction with a conformation show, a Trial Committee must be appointed by the club and this committee shall exercise all the authority vested in a Conformation Show Committee. If a rally obedience trial is held in conjunction with a conformation show, then the show-giving club holding the trial must appoint one person who will be designated as rally obedience trial chair. This person will be a member of the Conformation Show Committee and will advise the Conformation Show Committee on all matters which may come before it with respect to rally obedience trials. At the event, the Conformation Show Committee shall have sole jurisdiction over all the matters which may properly come before it, regardless of whether the matter has to do with the conformation show or rally obedience trial.
- 2.5.4 The decision of the Trial Committee (or the Conformation Show Committee if the trial is held in conjunction with a show) shall be conclusive on all matters arising at the trial and shall bind parties subject to the By-laws of the CKC. In cases when a rally obedience trial is held in conjunction with a conformation show, only the Rally Obedience Trial Rules & Regulations will bind all dogs entered in rally obedience competition.
- 2.5.5 Trial Secretaries, Superintendents and Trial Chairs may not handle a dog at any trial in which they are acting as an official.

2.6 Ring Stewards

The selection and training of stewards is important. Stewards will be needed who have been specifically trained to assist with rally. To ensure the smooth operation of a rally ring, clubs should provide a training session for stewards. Experienced stewards or judges can lead the training session.

-
- 2.6.1 Stewards are expected to be at ringside at least 30 minutes prior to the scheduled start of judging to receive any specific instructions from the judge and to assist in setting up the rally ring as directed by the judge.
- 2.6.2 Stewarding functions are broken down into four general categories:
- a) gate steward,
 - b) table steward,
 - c) time steward,
 - d) the Excellent Class, an honour steward.
- 2.6.3 In Rally Novice and Rally Advanced, the club will provide a minimum of three stewards. In the Rally Excellent Classes, an additional steward is needed to monitor and record the score for the honouring dog.
- 2.6.4 Stewards should remain outside the ring, unless instructed to remain in the ring by the judge, so as not to interfere with the performance of handler and dog.
- 2.6.5 Stewards must use a tape measure or steel ruler to ensure accuracy in setting the broad jump. Stewards must arrange jumps quickly and accurately. In case of dispute over the height of any dog, stewards shall consult the judge, who will measure the dog.
- 2.6.6 The Gate Steward.
- a) The primary responsibility of the gate steward is to ensure that the next dog to be judged is immediately available when the judge indicates that he is ready. As soon as the judge begins judging the dog in the ring, this steward calls the next dog and ensures the handler is at ringside before the dog in the ring has completed the rally exercises.
 - b) Dogs must be judged in catalogue order to the extent that it is practical to do so. If the dog listed next in the catalogue is not at ringside, the steward should call the next dog in order. It is the handlers' responsibility to be present and ready when their numbers are called.
 - c) The steward should report any absentees to the judge.
 - d) Exhibitors may make requests for special consideration, such as asking to be judged out of catalogue order. Any request of this nature must be directed to the judge.
-

-
- e) In Rally Advanced and Excellent Classes, it is the gate steward's responsibility to return the leash as dog and handler complete the "Finish" sign but before they leave the ring.
 - f) The gate steward is also responsible for the setting of jumps for dogs in the Rally Advanced and Excellent Classes.

2.6.7 The Table Steward.

- a) The steward will receive specific instructions from the judge as to what will be required.
- b) The judge may ask the table steward to prepare and have the worksheet ready for the next dog.
- c) The steward will ensure that the class, proper armband number, and breed of dog are entered correctly on the sheet, as well as the jump height of the dog, if applicable. The table steward must check to see that the scores on the worksheet have been added correctly. If an error is detected, the steward will bring it to the attention of the judge, who will enter any corrected score and time in the judge's book.
- d) The table steward will post the scores at ringside as each dog and handler team finishes the course.
- e) If trophies are offered, the table steward ensures that all trophies and ribbons are available at the conclusion of judging. The judge may ask the steward to assist in awarding the trophies and ribbons to the winners.

2.6.8 The Time Steward.

- a) The time steward will accurately time each dog. Any tied scores are broken by time.
- b) The steward is required to have at least one stopwatch, although it is helpful to have at least two stopwatches. The use of electronic timers is permitted.
- c) The timer is positioned in a place specified by the judge. When the judge gives the order "Forward," the timer starts the stopwatch and stops it when the dog and handler cross the Finish station. Times are reported immediately to the table steward after each dog completes the course.

2.6.9 The Honour Steward.

- a) The honour steward will monitor and record the score of the honouring dog in Rally Excellent.

-
- b) The judge will determine where each dog and handler will be stationed according to Rally Regulations, Section 11 and as described in exercise number 50.

2.7 Veterinarian

- 2.7.1 Every rally obedience trial shall have one or more qualified veterinarians in attendance before and during the entire progress of the trial, or within easy call.
-

3 JUDGES

3.1 Application for Approval of Judges

- 3.1.1 After the club has been granted permission by the CKC to hold a Rally Obedience trial, the club must submit the Application for Approval of Judges. This application must be received by the CKC not less than 120 days prior to the date of the trial.
- 3.1.2 When the Judging Panel Application reaches the CKC less than 120 days prior to the trial, an administrative fee as set by the Board will be assessed against the club.
- 3.1.3 The club shall not select any judge who is ineligible to officiate at a trial held under these rules and regulations.
- 3.1.4 Once approval is granted, the CKC will inform the trial-giving club that the judges have been approved. The trial secretary shall send to each approved judge a confirmation of assignment letter, supplied by the CKC as well as any other pertinent information that the club may include.
- 3.1.5 If the Canadian Kennel Club is not prepared to approve a selected judge, or it is not prepared to approve the entire assignment for which a judge has been selected, the club must submit to Head Office of The Canadian Kennel Club the name or names of alternative persons to judge that rally obedience trial.
- 3.1.6 Once a panel of judges has been approved by the CKC, no change will be permitted except when necessary (i.e. due to death or illness) and with CKC permission.
-

3.2 Judge's Eligibility

- 3.2.1 The Board may prescribe such regulations and procedures in order to determine and/or test the qualifications of a person applying for approval to judge any or all rally obedience trial classes, as well as any person already approved to judge rally obedience trials under these regulations.
- 3.2.2 The Board has the authority to do any or all of the following from time to time, as it deems advisable:
- (a) Prescribe and enforce regulations, policies and procedures, with a view to determining the qualifications of those wishing to establish eligibility to judge at approved rally obedience trials (available from the CKC upon written request).
 - (b) Fix policies and requirements applicable to non-resident judges.
 - (c) Prescribe requirements for the testing of judges who are the subject of complaints.
 - (d) Prescribe and communicate to judges, a Code of Ethics, of which any violations may subject the judge to the loss of any or all judging privileges.
 - (e) Take such other action as the Board may deem necessary from time to time with a view to ensuring an adequate supply of competent judges.
 - (f) Take generally such action, from time to time, to determine whether the judging privileges of a person should be continued, restricted or removed.

3.3 Contract Between a Club & a Judge

- 3.3.1 A verbal or written approach to a judge regarding a specific event must be confirmed in writing by the trial-giving club within 45 days of the inquiry or the assignment will be considered null and void and the judge is thereafter free to accept other assignments. In such circumstances, a judge who accepts another assignment must inform the trial-giving club by registered post.
- 3.3.2 After receipt of confirmation that the judge's services are required, a judge must confirm in writing within 45 days, acceptance of the assignment. If the club does not receive confirmation within 45 days, the agreement will be considered null and void and the club is free to seek the services of another judge. A letter to this effect must be mailed to the judge by registered post.

-
- 3.3.3 The Canadian Kennel Club will consider a signed letter by the club, for the engagement of a judge to officiate at future events, as a legal and authorized engagement. Any attempts to break such a contract by the club without reasonable and just cause could lead to immediate cancellation of future events until such dispute is settled. The Canadian Kennel Club will not enter into any disputes over fees and/or payments.

3.4 Judges Entering or Handling Dogs

- 3.4.1 Rally Obedience judges are allowed to exhibit dogs they own, co-own and dogs owned by other people at rally obedience trials.
- 3.4.2 A licensed judge officiating at a trial shall not enter or handle any dog at that same venue.
- 3.4.3 Immediate family members of rally obedience judges are allowed to exhibit at shows and trials at which the judge is officiating, but may not exhibit under the family member. In the case of a family member judging a tied score, the exhibiting family member must withdraw because of conflict and a notation will be made to this effect in the judge's book.

3.5 Indignities to a Judge

- 3.5.1 A judge officiating at a trial held under these rules shall not be subjected to indignities of any kind during the progress of the trial. It shall be the duty and obligation of the club holding the trial to see that this rule is effectively carried out.

3.6 Judge's Conduct

- 3.6.1 A judge must conduct himself in a manner that is fair and not prejudicial to the sport.

4 PREMIUM LIST, CATALOGUE & JUDGING SCHEDULE

4.1 Premium List

- 4.1.1 A judging schedule, premium list and catalogue must be provided for a rally trial.
- 4.1.2 A standard premium list must be published by all clubs holding rally obedience trials under these rules. A club that has been granted permission to hold a trial and has received approval of its selected judges must prepare and have printed a premium list with entry forms to be made available to prospective entrants.
- 4.1.3 Premium lists and entry forms shall be of such size, in such form, and contain such information as prescribed by CKC. The following information must be listed on the cover (or first inside page, excluding the inside cover) of the premium list:
- (a) The words “Official Premium List”
 - (b) The name of the club or association holding the event
 - (c) The type of event being held (i.e. All Breed Rally Obedience Trial, Rally Specialty Obedience Trial, etc.)
 - (d) Dates of the events
 - (e) Date and time of entries. No entries may be accepted, altered, canceled or substituted after the official closing date and time for entries except for as provided in these rules
- 4.1.4 The following information must appear in a premium list:
- (a) Exact location of the event (may include a map showing the location of the site)
 - (b) The statement “These events held under the rules of The Canadian Kennel Club”
 - (c) A statement whether the trial is indoors, outdoors or both
 - (d) If the trial is outdoors, a statement as to whether or not cover will be provided in case of inclement weather
 - (e) A list of the club officers (addresses may be given if desired)

-
- (f) A list of the Rally Obedience Trial Committee including the Rally Obedience Trial Secretary
 - (g) The address and phone number of where entries are to be sent (if different from the Event Secretary)
 - (h) A statement as to where entries are to be sent
 - (i) A listing of the judges and their mailing addresses
 - (j) A complete list of each judge's assignment broken down for each day
 - (k) A list of awards and prizes, if offered
(Note: trophies do not need to be described in detail)
 - (l) If money is to be offered as a prize, the amount for each award must be stated
 - (m) The amount of entry fee for each class
 - (n) If Unofficial Classes are offered, a description of the classes
 - (o) The name of the Chief Executive Officer of The Canadian Kennel Club and the address of the Head Office
 - (p) A club must include a statement defining the precincts of the trial. A building or specific area may be designated, but it must be clearly defined
 - (q) The name, address and telephone number of the CKC Board member and the CKC Obedience Representative for the zone in which the trial will be held
 - (r) A statement to include the wording of section 17.7 regarding indignities

4.1.5 At the time of distribution of premium lists to prospective exhibitors, 2 copies of the premium list must be sent to The Canadian Kennel Club and one copy each to the Obedience Trial Representative and Board member representing the zone in which the trial is to be held. When a specialty trial is held in conjunction with an all-breed event, it is the responsibility of the specialty club to separate its premium list data from the all-breed premium list and distribute copies as required, making sure that the event is clearly identified.

4.1.6 Clubs are free to include other rules and regulations, as they deem necessary. However, if other rules are included, they become part of the premium list and will be enforced.

-
- 4.1.7 When the advertised limit (if applicable) has been reached, all remaining entries may be assigned a position (by class) on the reserve list. The person making the entry shall be notified of his position on the list. In the event that the entry of a bitch in season is pulled after the closing date, it may be substituted with one from the reserve list up to and including the day of the trial. Entry fees will be refunded within 10 days following the trial for those on the reserve list who did not participate in the trial.

4.2 Catalogue

- 4.2.1 An official catalogue must be provided for all approved rally obedience trials. The official catalogue must be printed or typed.

- 4.2.2 The following information must be listed on the outside front cover or the first page of the catalogue:

- (a) Name of the club or association holding the trial
- (b) The dates of the trials
- (c) The statement "This event held under the rules of The Canadian Kennel Club"
- (d) Exact location of the trial
- (e) List of the Trial Committee including the Trial Chair
- (f) Name, address and phone number of the Trial Secretary
- (g) A complete list of the judges and their mailing address
- (h) A listing of each judge's assignments for each day

- 4.2.3 The information in the catalogue on each dog must be in the following order:

- (a) Catalogue number of the dog
- (b) Registered name of the dog (in capital letters only)
- (c) Canadian Kennel Club registration number (if given), or indicate "listed"
- (d) Date of birth
- (e) Name of breeders
- (f) Registered name of sire
- (g) Registered name of dam
- (h) Place of birth
- (i) Name of owners

-
- (j) Address of owners
 - (k) Agent (if applicable)

- 4.2.4 Catalogues must show all the information about competing dogs that is called for in the entry forms.
- 4.2.5 The name and address of The Canadian Kennel Club, and the name, address, and telephone number of the CKC Board Member and the CKC Obedience Representative for the zone in which the trial is to be held must appear on every catalogue or running list.
- 4.2.6 A trial-giving club shall provide a complimentary copy of its catalogue to each of the following: officiating judge, CKC Board member and to each CKC Obedience Representative representing the electoral zone in which the trial is being held if attending the trial.

4.3 Judging Schedule

- 4.3.1 A club holding a rally obedience trial must prepare a judging schedule, after entries close, showing the time scheduled for the judging of the various classes.
- 4.3.2 An identification card (containing name and number of a dog, class entered, and name of exhibitor) and a judging schedule must be sent to all exhibitors once entries have closed. The judging schedule must include the number of dogs entered in each class. A copy of the judging schedule must be sent to the CKC Head Office, each officiating judge, the CKC Board member and CKC Obedience Representative representing the zone in which the trial is being held.
- 4.3.3 A maximum of 20 dogs per hour can be scheduled. (After each two hour period of class judging, judges will allow a 10 minute walk-through for the next two hour block of dogs to be judged in the class. The 10 minute walk-through must be included in the scheduled judging times.)
- 4.3.4 Judges should not exceed those averages during the period of the advertised hours of the show's and/or trial's duration. Judges will be assigned to officiate for no more than seven hours judging in one day, and must be provided with a reasonable meal period of not less than 30 minutes. Judges may take breaks for rest or meals at their discretion.

-
- 4.3.5 Where a trial-giving club is notified before or after the issuance of a judging schedule that an advertised judge will not, for whatever reason, be able to fulfill a judging assignment, attempts will be made to secure CKC approval for a replacement judge. If, due to circumstances beyond the control of the trial-giving club, a replacement judge is required at the last moment, the club will then seek the approval of the local Board member. The club will subsequently notify the CKC of the circumstances of the approval and of the changes made. In all cases, changes in judging will be posted in a prominent location at ringside and all those who have entered dogs under the advertised judge shall be allowed to withdraw at any time prior to judging of that trial. All requests for withdrawal shall be in writing and all entry fees and listing fees will be returned to the owner or the authorized agent of the dog. Where possible, the trial-giving club will attempt to notify exhibitors of the judging change at the time of mailing of the judging schedule.
- 4.3.6 Where an advertised judge has judged part of a class and finds it impossible to finish, a substitute judge shall be selected by the Conformation Show and/or Trial Committee. The awards and scores made by the advertised judge shall stand and the substitute shall judge only those remaining classes and awards. No dog entered under the advertised judge shall be withheld from competition if it has already been passed by the advertised judge. Any dogs which have yet to appear in the ring may be withdrawn from competition if requested in writing by the handler, however, the entry fee will not be refunded.
- 4.3.7 If an advertised judge is prevented from fulfilling an assignment in whole or in part, the Conformation Show and/or Trial Committee, shall appoint a qualified judge if one is readily available. If no qualified judge is available, the Committee shall choose a substitute whom it feels is capable.
- 4.3.8 A qualifying score earned under a substitute judge will be considered as having been earned under the advertised judge.
- 4.3.9 All rally obedience trials held under these rules must be completed no later than 11:00 p.m.

5 RIBBONS & PRIZES

5.1 Ribbons & Prizes

- 5.1.1 A club or association holding a trial under these rules shall provide ribbons and rosettes as provided in this section.
- 5.1.2 Awards in each class will be based solely on the number of points earned, with the exception of ties. There are no awards for competition between classes.
- 5.1.3 The following information must appear on the face of each ribbon or rosette: name of the club or association holding the trial; the crest of the CKC; the words "Rally Trial."
- 5.1.4 Each dog that receives a qualifying score in Rally will receive a ribbon or rosette indicating "Qualifying Score." It shall be royal blue in colour, not less than 5.08cm (2") wide, and not less than 20.32cm (8") in length.
- 5.1.5 A "High in Class" rosette, identifying the class, shall be provided for each class. The colour shall be royal blue and white. Rosettes may be offered for 2nd, 3rd, and 4th place. Each rosette must identify the class and standing. The colour shall be royal blue and white.
- 5.1.6 A ribbon shall only be provided for a dog that receives a qualifying score. Prizes and/or trophies will also only be awarded to dogs with a qualifying score.
- 5.1.7 All other ribbons or rosettes offered shall be green.
- 5.1.8 When a rally trial is held in conjunction with a conformation show, all rosettes will be of equal size to those being presented at the conformation show.
- 5.1.9 Only prizes and/or trophies that are listed in the premium list may be awarded. Prizes and/or trophies are to be awarded by the judge to the person handling the dog in the ring.

6 ENTRIES & END OF TRIAL

6.1 Entry Requirements

- 6.1.1 Every dog entered in an approved rally obedience trial or sanctioned rally obedience match must be one of the following:
- (a) Registered with the CKC
 - (b) Have an Event Registration Number
 - (c) Have a Performance Event Number
 - (d) Eligible for registration with the CKC
 - (e) Have a Miscellaneous Class Certification number (MCN) if it belongs to a CKC listed breed.
- 6.1.2 To be eligible to compete at approved rally obedience trials or sanctioned rally obedience matches a dog must meet the requirements of Section 6.1.1, and:
- (a) Must be at least 6 months of age.
 - (b) May be spayed, neutered, or debarked.
 - (c) May not be lame (it is the judge's responsibility to determine whether a dog is lame).
 - (d) May not compete if it has tape or bandages that may impair its working ability (such a dog must be immediately excused and under no circumstances may it be returned later for judging after the tape or bandages have been removed).
 - (e) Entries in each class may be arranged according to the size of the dog.
- 6.1.3 If a dog is not registered individually in the records of the CKC, it may be entered at a trial held under these rules as a "listed" dog, provided that:
- (a) If born in Canada, it is eligible for individual CKC registration.
 - (b) If not born in Canada it is eligible for individual registration in the records of the CKC.
 - (c) If it is a foreign born and owned dog, an Event Registration Number or CKC registration number is obtained from the CKC within 30 days of the first trial entered.
- 6.1.4 The entry of a listed dog at a rally obedience trial held under these rules (sanctioned rally obedience matches excluded), must be accompanied by the appropriate

listing fees. All fees, listing and recording, must be remitted to the CKC by the club or association holding the trial, within the 21 days following the trial.

- 6.1.5 The CKC has the authority, at any time, to require the owner of a “listed” dog to submit proof of the dog’s eligibility for registration in the CKC stud book, and if the CKC is satisfied that the dog is not eligible for registration, it shall have the right to order the cancellation of all scores and prizes earned by the dog at trials held under these rules. Failing to comply with the CKC’s request to return ribbons and/or prizes to the clubs concerned automatically renders the owner of the dog ineligible to enter any dog in any competition approved by the CKC.
- 6.1.6 The CKC shall have the authority to advise a person entering a dog at a rally obedience trial that he may no longer include in the name of a dog any name which, in the opinion of the CKC, infringes on the rights of any person, partnership, or company whose kennel name has been registered by the CKC, or where such name is considered to be similar to a kennel name registered with any other national kennel club with whom the CKC has working arrangements with regard to mutual protection of registered kennel names. Where a person has been advised that he may no longer include a particular name in the name of a dog and the person continues to enter the dog at rally obedience trials with such name included, the CKC shall have the authority to cancel all awards, scores and prizes earned by the dog at rally obedience trials held after the original advice was communicated to the owner of the dog.
- 6.1.7 Subject to the provisions stated in these rules, no dog may be entered in any class for which it is not eligible at the time entries for the trial close. The entry of a dog that is improperly entered in a class for which it is not eligible cannot be altered to another class after entries close.
- 6.1.8 No entry shall be made at any rally obedience trial under a judge of any dog which the judge, or any member of his immediate family or household owns, has owned (wholly or in part), sold, held under lease, handled in the ring, boarded, trained, or instructed regularly, within 6 months prior to the date of the trial. This includes judges who train professionally, or as amateurs, and applies equally to judges who train individual dogs, as well as those who train dogs in classes with or through their handlers. However, the above limitations as to trainers shall not apply at sanctioned rally obedience matches.

-
- 6.1.9 Exhibitors/handlers who train professionally or instruct a training class may not exhibit under a judge who has participated regularly in the exhibitor's/handler's training class within 6 months prior to the date of the trial.
 - 6.1.10 Every dog must be the bonafide property of the person listed as owner.
 - 6.1.11 A dog may only be entered once in each class.
 - 6.1.12 If the name of a dog which has earned a qualifying score at any rally obedience trial is subsequently changed, the old name must be given on the entry form at the next 2 rally obedience trials at which the dog is entered under its new name.
 - 6.1.13 The officials of any trial may decline to accept entries for just cause and no one shall have any claim or recourse against the organization holding the trial or any official connected therewith. Said officials must file their reasons for doing so with the CKC not less than 21 days after the trial has been held.
 - 6.1.14 Only dogs entered in official classes, including Exhibition Only, are permitted within the precincts of the trial.
 - 6.1.15 There shall be no intensive or abusive training of dogs within the precinct of the rally obedience trial. Violation of this rule may result in the removal of the dog from further competition at that rally obedience trial on that day.
 - 6.1.16 No badges or clothing with club identification thereon, shall be worn or displayed by exhibitors/ handlers when exhibiting in the ring.
 - 6.1.17 When entries are made for a rally obedience trial not held in conjunction with a conformation show, entries must close not less than 10 days in advance of the trial and all entries must be in the hands of the trial secretary by that date and time. Clubs accepting any entries after the closing date shall be subject to an administrative fee as set by the Board.
 - 6.1.18 When a rally obedience trial is held in conjunction with a conformation show, a dog can be entered in rally obedience classes only; however, in such cases, the entry form must state "for rally obedience trial competition only" followed by the class or classes entered. If, however, a dog is also entered for competition in the conformation show, the Conformation Show Rules must also be observed.

6.2 Entry Forms

6.2.1 The following information must appear on each entry form:

- (a) Registered name of dog
- (b) CKC individual registration number (if registered in the CKC studbook), Event Registration Number (ERN), Miscellaneous Certification Number (MCN) if it belongs to a listed breed, or Performance Event Number (PEN)
- (c) Name of breed
- (d) Variety (if applicable)
- (e) Sex of dog
- (f) Date & place of birth
- (g) Name of sire and dam
- (h) Name of breeders
- (i) Classes entered
- (j) The height of the dog at the withers for Advanced and Excellent
- (k) Name and complete address of owner of the dog
- (l) Signature and telephone number of the owner or authorized agent
- (m) Name of handler if the dog is not to be handled by the owner or a member of the owner's immediate family.

6.2.2 A trial-giving club must reject an incomplete entry form, and promptly return it to whomever submitted it, be it the owner, lessee or authorized agent.

6.3 Entry Fees

6.3.1 A club may not accept an entry fee other than that which is published in the premium list or entry form or in any way discriminate between entrants.

6.3.2 The entry of a dog at a trial held under these rules must be accompanied by the entry fee.

6.3.3 Tendering of a dishonoured cheque or credit card in payment of entry fees shall be considered non-payment of entry fees, and is an offence punishable by disciplinary action and cancellation of awards.

6.3.4 The Rally Obedience Trial committee may decline any entry or may remove any dog from its trial for just cause, but in each such instance, shall file good

and sufficient reasons for doing so with The Canadian Kennel Club within 2 weeks of the trial.

- 6.3.5 Non-compliance with this section of these rules shall be considered an offence punishable by disciplinary action and cancellation of awards.

6.4 Dogs Must Compete

- 6.4.1 Any dog entered and received at a rally obedience trial must compete in all exercises of all classes in which it is entered, unless excused by the judge, official veterinarian, superintendent, or the Rally Obedience Trial Committee chair. If excused by the official veterinarian, the excuse must be in writing on the form provided and attached to the judge's book. If the dog is excused by either the superintendent, judge, or Rally Obedience Trial Committee chair, a note to this effect must be attached to the judge's book and the reason stated thereon.

6.5 Bitches In Season

- 6.5.1 Bitches in season are not permitted to compete. The judge of a rally obedience trial must remove from competition any bitch in season, or any bitch which appears so attractive to males as to be a disturbing element.
- 6.5.2 When a bitch comes into season after entry of the bitch has been submitted to the trial secretary, a veterinarian's certificate, certifying that the bitch was in season within the 10 day period preceding the trial, must reach the trial secretary on or before the date of the trial. The trial-giving club must refund the entry fee, service charge and listing fee. The refund and the terms thereof must be clearly stated in the premium list.

6.6 Health

- 6.6.1 No dog may be entered at a trial held under these rules if the dog:
- (a) Is known to have distemper, parvovirus, kennel cough or other communicable disease, or
 - (b) Has recovered from infection with canine distemper or canine parvovirus within the last 14 days.
- 6.6.2 It is recommended that all dogs have a current immunization status.

-
- 6.6.3 Where it is found that these rules have been contravened, the dog in question shall be removed from the trial premises and the exhibitor/handler will be subject to disciplinary action.

6.7 Moving Up

- 6.7.1 A dog that is registered in the records of the CKC or has a PEN, an ERN, or a MCN and has fulfilled the requirements for a title in accordance with these rules, may be moved to the next level of competition. The transfer must be submitted to the trial secretary on the appropriate move-up form by the owner or handler one hour before the opening of the first trial on that day, schedule permitting.
- 6.7.2 If it is established by the CKC that a dog moved up to the next level has not completed the requirements for the lower level before moving up, then all qualifying ribbons and/or awards earned by the dog incorrectly entered shall be forfeited and cancelled by the CKC and the owner may be subject to disciplinary action.
- 6.7.3 In order for a dog to be eligible to move up, the dog must be registered in the records of the CKC or have a Performance Event Number (PEN), or an Event Registration Number (ERN) or a Miscellaneous Certification Number (MCN) before entries close. The addition of a CKC number after close of entries does not make the dog eligible and will result in referral to the Discipline Committee.

6.8 End of the Trial

- 6.8.1 The club secretary or the trial secretary of the club holding a rally obedience trial shall, within 21 days of the completion of an approved rally obedience trial forward to the Canadian Kennel Club the official catalogue marked to indicate the scores made in all classes and all absentees noted.
- 6.8.2 A club must forward an official catalogue to The Canadian Kennel Club with the following:
- (a) An unmarked catalogue
 - (b) All entry forms
 - (c) All judge's books marked and signed by the officiating judge
 - (d) Apprentice judge's books and reports

-
- (e) Any other information or reports as may be required by the CKC
- 6.8.3 The CKC may require a trial-giving club to provide a report of any matter or matters connected with its trial. This must be made within 2 weeks of the date on which the club received the request for such report.
- 6.8.4 The trial-giving club is responsible for the collection of all listing and recording fees. Within 21 days after the completion of its trials, the trial-giving club shall forward the following to the CKC:
- (a) The signed certificate over the signatures of the president and secretary of the club as to the number of listed dogs entered in its trial, and the total number of dogs entered in competition in its trial.
 - (b) A remittance that shall include all listing and recording fees as set by the Board for each dog entered in competition in its trial. In the event that the CKC establishes that the remittance fails to completely cover the fees set forth above, an administrative fee will be assessed against the club, as set by the Board.
- 6.8.5 An administrative fee as set by the Board will be imposed for each day's delay in the returns reaching the CKC.

7 UNSPORTSMANLIKE CONDUCT

- 7.1 It shall be deemed unsportsmanlike conduct if a person during the running of or in connection with an event abuses or harasses a judge, trial official or any other person present in any capacity at the event.
- 7.2 Any handler who displays unsportsmanlike conduct or who is seen to kick, strike or otherwise roughly manhandle a dog at any time during the holding of the event, may be expelled from the trial by the Rally Obedience Trial Committee.
- 7.3 The judges shall also have the authority to expel a handler from a trial if they observe unsportsmanlike conduct on the part of the handler or see the handler kicking, striking or otherwise roughly manhandling a dog while the event is in progress. It will be the duty
-

of the judge to report promptly to the Rally Obedience Trial Committee the expulsion of a handler.

- 7.4 The Rally Obedience Trial Committee shall investigate, at once, any instance of alleged unsportsmanlike conduct on the part of the handler, or any report that a handler has been observed kicking, striking or otherwise roughly manhandling a dog. If the Trial Committee, after investigation, determines that a handler is in violation of this section, and that the incident, if proven, would constitute conduct prejudicial to the sport or the CKC, it shall exercise its authority in accordance with the Complaints section of these rules.
- 7.5 The trial secretary shall submit to the CKC a complete report of any hearing action taken under this section within 21 days.

8 REGULATIONS FOR PERFORMANCE & JUDGING

8.1 Judging Standard

- 8.1.1 Rally is a sport in which the dog and handler complete a course that has been designed in advance by the rally judge. The judge tells the handler to begin, and the dog and handler proceed at their own pace through a course of designated stations (10 - 20, depending on the level). Each of these stations has a sign providing instructions regarding the skill that is to be performed.
- 8.1.2 Scoring is not as rigorous as in traditional obedience.
- 8.1.3 Rally Regulations give the judge guidelines for how an exercise is to be performed. While rally is not judged with the same precision as formal obedience, rally judges must make decisions based on a mental picture of the theoretically perfect performance within the framework of the Rally Regulations. Rally Regulations are the basic guide to judging. However, only the more common and serious faults are covered.

8.2 Disqualification & Reinstatement of a Dog

- 8.2.1 A dog that bites a judge, another person or dog in the ring shall be disqualified by the judge. At the judge's

discretion, a dog that attempts to bite a judge, another person or dog in the ring shall be excused or disqualified by the judge and shall not be permitted to compete further at that event. When a dog has been excused twice on this account, it shall have the status of a disqualified dog. Once a dog has been disqualified for any reason at a rally obedience trial, it may not be entered or shown in any CKC event until the dog has been reinstated by the CKC.

- 8.2.2 When a judge disqualifies or excuses a dog, the disqualification or excusal and the reason therefore must be recorded in the judge's book. The owner or handler of the dog must be advised of the reason before he leaves the ring.
- 8.2.3 A dog that has been disqualified may be reinstated as follows:
- (a) The owner of a dog, which has been disqualified at a trial held under these rules may, after 30 days from the date of disqualification, apply in writing to the CKC for reinstatement of the dog. A deposit, as set by the Board, must accompany the request for reinstatement.
 - (b) After the examination, the Examining Committee shall submit its report to the CKC who, in turn, will advise the owner of the results. If reinstated, half of the deposit will be returned to the owner. If not reinstated, the deposit is forfeited to the CKC.
 - (c) Reinstatement of a dog following an examination as set forth in this section in no way affects the right of a judge to again disqualify the dog for the same or other reasons.
- 8.2.4 Any dog disqualified for biting or viciousness shall automatically be disqualified from entering in any other event in any other discipline until such time as the dog is officially reinstated.
- 8.2.5 All persons must exercise care and control of any dog in their possession while attending an event.

8.3 Handler with Disabilities

- 8.3.1 Handlers with disabilities may compete, provided such handlers can move about the ring without physical assistance. The use of a wheelchair, crutches, or cane is acceptable.

-
- 8.3.2 When necessary, an exercise may be modified in order to help the handler execute the exercise, but the modification must not aid the performance of the dog. The dog is required to perform all parts of the exercises as described in these rules.
- 8.3.3 The heeling exercises are expected to be performed at a brisk pace and there must be a definite change of pace during the slow and fast portion. Failure to do the above will result in a penalty, the same as for any other handler. Proper heel position must be determined prior to the commencement of the exercises and this position should be maintained throughout.
- 8.3.4 A handler who is blind may be assisted, if necessary, by the judge to get from one exercise to another. e's commands.

8.4 Qualifying Performance

- 8.4.1 To qualify, a dog and handler team must receive a minimum score of 70 points out of a possible perfect score of 100.
- 8.4.2 Three qualifying scores of 70 points or more must be earned under at least two different judges in each class to earn a title. Scoring for all levels is based on a maximum score of 100 points.
- 8.4.3 Any faults in traditional obedience that would be evaluated and scored as a one-point deduction or more should be scored the same in Rally, unless otherwise mentioned in the "Rally Regulations." There shall be no 1/2 point penalties in Rally.

8.5 Judge's orders and Signals

- 8.5.1 The judges' orders will be, "Are you ready?" followed by, "Forward." After the judge's "Forward" order, the team is on its own to complete the entire sequence of numbered exercises correctly.

8.6 Catalogue Order

- 8.6.1 Dogs must be judged in catalog order to the extent that it is practical to do so. For the Advanced and Excellent classes, the trial secretary or superintendent may arrange entries according to the dogs' jump heights.

-
- 8.6.2 A judge need not mark absentees in the judge's book until the end of the class. Judges are not required to wait for dogs.

8.7 Judge's Book

- 8.7.1 No person other than the judge may make an entry in the judge's book. The judge will record the final scores in the judge's book, and mark the time started and finished, initial any corrections, and sign the book.
- 8.7.2 Following completion of the judging of each class and awarding of ribbons, the yellow copy of the judge's book, which sets forth the scores assigned by the officiating judge, must be posted in a prominent place, within the precincts of the trial.

8.8 Re-judging

- 8.8.1 At the judge's discretion if a dog's performance was prejudiced by peculiar or unusual conditions, the judge may re-judge the dog on the entire course.

8.9 Ties

- 8.9.1 In the case of tie scores, the dog and handler completing the course in the least amount of time will receive the higher placement and a plus (+) after the score. The original scores will not be changed. In the event that both the score and time are the same, the dog and handler teams will repeat the course and be judged and timed again.

8.10 Scores

- 8.10.1 Scores will be posted ringside after each dog and handler team has completed the final exercise. Times will be recorded but not posted.

8.11 Scoring (all classes)

The following deductions shall apply:

1-point deduction for each of the following:

- tight leash
- dog interfering with handler's forward motion
- poor sits, downs or fronts

-
- slow or resistant response
 - touching or ticking a jump, pylon or post
 - out of position

3-point deduction for each of the following:

- repeat of a station (maximum of 2 re-tries allowed)
- pylon/post knocked over (on Figure Eight, Spiral and Serpentine)
- lack of control
- loud command or intimidating signal
- excessive barking

10-point deduction for each of the following:

- incorrectly performed station
- hitting the jump

1 to 10-point deduction:

- lack of teamwork
- lack of briskness
- handler error

Non-qualifying (NQ) scores shall be given for:

- minimum requirements not met
- dog unmanageable, or uncontrolled barking
- station not attempted
- consistently tight leash
- substantially out of honour position
- not completing the honour exercise
- dog relieving itself in the ring
- bar knocked off the uprights of jump
- using a jump as an aid in going over a jump
- failure of dog to go over jump in the proper direction
- handler error

8.12 Timing

- 8.12.1 All dogs will be timed. Times will be used only in the event of ties for a placement. Timing will begin when the Judge gives the order, "Forward" and will end when dog and handler cross the finish line.

8.13 Ring Procedure

- 8.13.1 Signs will be placed to the right of the handler's path except for those indicating a change in direction, in which case the sign will be directly in front of the handler.

-
- 8.13.2 Exercises using cones may require entry with the sign on the left. Exact placement of signs is made by the judge while walking the course along the path that will be taken by the handlers.
 - 8.13.3 The course for each class will be posted at the ring prior to the familiarization time (see below).
 - 8.13.4 Except for exercises requiring entry with the sign on the left, exercises are performed near the designated signs, either directly in front, or in front and to the left of said signs.
 - 8.13.5 A 10-minute walk-through for approximately each two hours of judging will be allowed for handlers, without their dogs. After each two-hour period of judging, judges should allow an additional 10-minute walk-through for the next two-hour block of dogs to be judged in the class.
 - 8.13.6 When the same course is used for A and B Classes, the judge may choose to combine the classes for the walk-through time. The judge must be available in the ring during this period to answer any questions the handlers might have. The judge may also choose to brief the handlers on the course during this period.

8.14 Commands and Signals

- 8.14.1 Unlimited communication from the handler to the dog is to be encouraged and not penalized. Unless otherwise specified in these Regulations, handlers may encourage their dogs with verbal praise and petting.
- 8.14.2 Multiple commands and/or signals using one or both arms and hands are allowed; the handler's arms need not be maintained in any particular position at any time.
- 8.14.3 The handler must not physically guide the dog or make physical corrections. At any time during the performance, loud or harsh commands or intimidating signals will be penalized.

8.15 Praise, Food, & Petting

- 8.15.1 While praise, encouragement, and petting are allowed, dogs should remain under control. A dog whose handler takes food or other training aids into the ring must be excused from that class.

8.16 Collars and Leashes

- 8.16.1 The leash must be made of fabric or leather and must be long enough to provide adequate slack. Collars used in rally must be the same as those accepted for use in obedience trials.

8.17 Heel Position

- 8.17.1 The team of dog and handler moves continuously at a brisk, but normal, pace with the dog under control at the handler's left side. There should be a sense of teamwork between the dog and handler both during the numbered exercises and between the exercise signs; however, perfect "heel position" is not required.

8.18 Rings and Equipment

- 8.18.1 The required minimum area for a rally course is 40 x 50 feet, however 40 x 80 feet is recommended. The floor covering or ground surface must be the same as would be suitable for traditional CKC obedience trials.
- 8.18.2 Upon arrival, the judge will post the course(s) outside the ring. The judge may alter the course because of unforeseen ring conditions and post the changes(s). Prior to the scheduled judging time, the judge should inspect the ring, which must meet all requirements of the Rally Regulations. Size may be determined by the judge pacing the ring.
- 8.18.3 All equipment must be provided by the club hosting the event.
- 8.18.4 Signs and Holders
- a) The designated wording and symbols must be used. Signs must be a minimum of 8-1/2 x 11 inches and a maximum of 11 x 17 inches. Weather conditions should be considered when securing signs and holders.
 - b) Colours used for the signs are optional.
 - c) Twenty exercise sign holders are required plus one for each Start and Finish signs.
 - d) All sign holders or signs (not including those for Start and Finish) will be clearly and sequentially numbered on the course, with numbers approximately 3 inches high. Signs with an asterisk (numbers 5, 6, 7, 8, 9, 10, 17, 18, 19, and 34) may be used multiple times on a rally

course. Two of each of those signs must be available for the judge's use. All other signs may only be used once on any course.

- e) Stationary exercises are any signs indicating a "Halt" or no forward motion.

8.18.5 Other Equipment

- a) At least four pylons, cone markers, or posts must be provided for Exercises #21 - 24, and two secure containers of treats, and/or toys, as distractions for Exercise #39.

- b) Jumps

- i) Jumps used as standard equipment in CKC Obedience Trial Open and Utility Classes (broad jump, high jump, and bar jump) must be available for Rally Advanced and Excellent Classes, except that four foot wide jumps may be used instead of the standard five foot width jumps.

It is both the judge's and the handler's responsibility to see that jumps are set for each dog in accordance with these Regulations.

- ii) The High Jump consists of two uprights and solid boards of varying widths that combine to make each dog's required jump height.
- iii) The Bar Jump also has two uprights. These are constructed to support only a striped bar which is set at the dog's required jump height.
- iv) The Broad Jump will consist of three telescoping hurdles, each approximately 8 inches wide. (The first hurdle consists of two 4" sections, which will be used for a jump of 12 inches.) The largest hurdle will measure about 4 feet 10 inches long (if from a 5-foot set) and about 5 inches at the highest point.

In the ring, broad jump hurdles will be arranged in order of size from smallest to largest. They will be evenly spaced, covering a distance equal to twice the height of the high jump set for each dog. Two 4" hurdles will be used for a jump of 12 inches; two 8" hurdles for a jump of 16 or 24 inches, and three 8" hurdles will be used for a jump of 32 inches. When decreasing the number of

hurdles in the jump, the highest hurdle will be removed first.

v) **Jump Heights and Lengths**

The dog's jump height shall be given on the entry form. Entries may be arranged according to the jump height of the dogs, from either high to low or low to high.

Height of Dog at Withers	Height to be Jumped
Under 10"	6"
10" and under 15"	8"
15" and under 20"	12"
20" and over	16"

The distance to be jumped for the broad jump will be set to twice the height required.

9 RALLY NOVICE CLASS R.N.

9.1 Rally Novice A

9.1.1 Dogs competing in this class may not have won a CKC Rally Novice (R. N.) title or any CKC Novice Obedience title. The handler of any dog in this class must be the owner, co-owner, or a member of their immediate families. A person may enter more than one dog in this class.

9.1.2 A dog may continue to compete in this class after the owner has been notified by at least 2 different judges that the dog has won 3 qualifying scores in this class. However, a dog may not be entered or exhibited in this class in any rally trial after the owner has received official notification from the CKC that the dog has won the title. No dog may be entered in both Rally Novice A and Rally Novice B at any one trial.

9.2 Rally Novice B

9.2.1 Any dog may compete in this class until a qualifying score in the Rally Advanced Class is earned. The owner or any other person may handle dogs in this class. A person may enter more than one dog in this class.

-
- 9.3 All exercises are judged on leash, and all dogs must enter and leave the ring on leash.
- 9.4 Rally Novice A and B must have between 10 - 15 stations (Start and Finish not included) with no more than five (5) stationary exercises per class.
-

10 RALLY ADVANCED CLASS R.A.

10.1 Rally Advanced A

- 10.1.1 This class shall be for dogs that have won the Rally Novice (R. N.) title but have not won the Rally Advanced (R. A.) title or any CKC Novice Obedience title. The handler of any dog in this class must be the owner, co-owner, or a member of their immediate families. A person may enter more than one dog in this class.
- 10.1.2 A dog may continue to compete in this class after the owner has been notified by at least 2 different judges that the dog has won 3 qualifying scores in this class. However, a dog may not be entered or exhibited in this class in any rally trial after the owner has received official notification from the CKC that the dog has won the title. No dog may be entered in both Rally Advanced A and Rally Advanced B at any one trial.

10.2 Rally Advanced B

- 10.2.1 This class will be for dogs that have won the Rally Novice (R.N.) title. A dog completing the Rally Advanced (R.A.) title may continue to compete in this class indefinitely. The owner or any other person may handle dogs in this class. A person may enter more than one dog in this class.
- 10.3 All exercises are judged off leash. All dogs must enter and leave the ring on leash.
- 10.4 Rally Advanced A and B must have between 12 - 17 stations (Start and Finish not included) with no more than seven (7) stationary exercises per class.

One jump must be used for this class.

11 RALLY EXCELLENT CLASS R.E.

11.1 Rally Excellent A.

- 11.1.1 This class shall be for dogs that have won the Rally Advanced (R. A.) title, but have not won the Rally Excellent (R. E.) title or any CKC Novice Obedience title. The handler of any dog in this class must be the owner, co-owner, or a member of their immediate families. A person may enter more than one dog in this class.
- 11.1.2 A dog may continue to compete in this class after the owner has been notified by at least 2 different judges that the dog has won 3 qualifying scores in this class. However, a dog may not be entered or exhibited in this class in any rally trial after the owner has received official notification from the CKC that the dog has won the title. No dog may be entered in both Rally Excellent A and Rally Excellent B at any one trial.

11.2 Rally Excellent B

- 11.2.1 This class will be for dogs that have won the Rally Advanced (R.A.) title. A dog completing the Rally Excellent (R.E.) title may continue to compete in this class indefinitely. The owner or any other person may handle dogs in this class. A person may enter more than one dog in this class.
- 11.3 All exercises are judged off leash except the Honour Exercise. All dogs must enter and leave the ring on leash.
- 11.4 Rally Excellent must have between 15 - 20 stations (Start and Finish not included) with no more than seven stationary exercises per class. Two jumps must be used for these classes. Jumps may be any jump or any combination of the jumps that may be used as standard equipment in the CKC obedience classes (broad jump, high jump, or bar jump), except that 4-foot jumps may be used in place of 5-foot jumps. Jumps may not be used consecutively on the course.

11.5 Honour Exercise.

- 11.5.1 An honour Exercise must be included in the Rally Excellent Classes.

Prior to each class, the judge will designate either the sit or the down for the Honour Exercise, as well as the placement in the ring, and will also designate where the handler will stand during the exercise - either next to or facing the dog. The Honour Exercise must not be in the path of the dog and handler team that follows. Volunteer dogs will be used for both honouring the first dog in the class and as a course run-through when the last dog performs the Honour Exercise.

- 11.5.2 After completing the course, each dog and handler team may either re-enter through the finish gate, or they may proceed directly to the honour station. The dog must remain in the designated position to honour the next dog and handler's entire course. This exercise must be performed on leash. For the Honour Exercise, the honour steward will monitor each team, record the score, and immediately report it to the table steward.

12 THE RALLY ADVANCED EXCELLENT TITLE R.A.E.

- 12.1 Upon completion of the Rally Excellent title, qualifying scores may be accumulated from the Rally Advanced B Class and the Rally Excellent B Class to earn the Rally Advanced Excellent (RAE) title.
- 12.2 In order to receive the RAE title, a dog must qualify ten (10) times in both the Rally Advanced B Class and the Rally Excellent B Class at the same trial. The RAE title will appear at the end of the dog's name and a numeric designation will indicate the number of times the dog has met RAE requirements, i.e. RAE2, RAE3, etc.

13 EXHIBITION CLASS ONLY

13.1 Exhibition Only

- 13.1.1 This is an official class. A dog may be entered for Exhibition Only, which must be specified, on the entry form. All dogs entered in this class shall be listed in the catalogue with the same particulars as for a dog entered for competition. No dog so entered can compete in any Regular class, however, it may be entered in and compete in any Unofficial class or Parade if provided for in the classification of the trial, and on payment of the prescribed fees. If applicable, the listing fee is payable. A listing fee is not required for a listed dog entered in Exhibition Only (not entered for any competition).

14 SANCTION RALLY OBEDIENCE MATCHES

- 14.1 A sanctioned rally match is a competition at which dogs of six months of age or older, whose breed is recognized or is included in the Miscellaneous list as designated by the Board, may compete, but not for legs for a rally title. It is a learning experience for all trial officials, judges, stewards, handlers and exhibitors.
- 14.2 A club or association wishing to hold a sanctioned rally match under CKC rules must obtain the approval of the CKC by submitting an application for a match date, on the form provided by the CKC, to the CKC Board member for the respective zone.
- 14.3 The granting of sanctioned rally match dates is at the discretion of the local CKC Board member.
- 14.4 Dates must be applied for not less than 60 days prior to the date of the sanctioned match. Dates are allocated on a first come, first served basis. In special circumstances, the CKC Board member for the respective zone may waive the 60 day requirement.

-
- 14.5 The Provincial or Zone Obedience Representative is responsible for the compilation of a list of persons interested in judging sanctioned rally matches. Representatives should keep this list of such people, who appear capable of and interested in judging sanctioned rally matches, up to date. A person should not be expected to judge classes at a level higher than that in which he has completed titles on a dog unless in special circumstances (i.e., qualified persons not available). Clubs are requested to select judges from the lists prepared by the Obedience Representatives where possible and should contact their Obedience Representatives before appointing judges.
- 14.6 A club holding a sanctioned match must appoint a rally chair as well as a trial secretary and ring stewards. Clubs holding sanctioned rally matches are required to have available copies of the latest edition of these Obedience Trial and Rally Rules & Regulations at all sanctioned matches.
- 14.7 Classes may be provided for all Official Classes. The Excellent Class may be held only if Advanced and Novice Classes are offered; Advanced Classes may be held only if Novice Classes are offered. The order of judging is at the discretion of the club. A dog may not enter a class for which it has received a title. A dog with a title may go through the routine, but it is not eligible for ribbons or prizes.
- 14.8 The Obedience Trial and Rally Rules & Regulations, with the exception of those sections pertaining to titles, shall apply at all sanctioned rally matches.
- 14.9 Ribbons or cards can be given at sanction matches for Passing Scores and the following information must appear on the face of each ribbon/rosette: name of the club or association holding the match, "Sanctioned Rally Match" and "Passing Score". Passing Score ribbons must be gold in colour. High in Class ribbons/rosettes must be gold and white and clearly indicate the awards for which they are presented. All other ribbons offered must be dark green. A dog shall not be given a ribbon or a card if the dog has not earned a passing score in a class.
- 14.10 The judge's books must be made up of rally trial judges' sheets or a facsimile thereof as per the Obedience Trial and Rally Rules & Regulations.
- 14.11 The set-up procedure followed at sanctioned rally matches should follow approved rally trials.
-

15 PROTESTS

- 15.1 A protest against a dog may be made, by an exhibitor/handler, any member of the CKC, or a member of the club or association holding the obedience trial. It must be in writing, on a form provided by the CKC (or facsimile thereof), and be lodged with the Show Superintendent or Rally Obedience Trial Committee Chair before the closing of the trial. A hearing shall be held prior to the departure of all parties. No protest will be entertained unless accompanied by a deposit. This deposit will be returned if the protest is sustained. If the protest is not sustained, the deposit will be forwarded to the CKC with the Rally Obedience Trial Committee's report.
- 15.2 Where the Rally Obedience Trial Committee consists of more than 5 persons, the Show Superintendent or Rally Obedience Trial Committee Chair of the trial-giving club shall name 5 members of the Rally Obedience Trial Committee to act on any protest received by the trial-giving club.
- 15.3 Written copies of all decisions on protests must be forwarded immediately to the Discipline Committee of the CKC. The Discipline Committee may take such action as it deems fit in connection with such protest, provided no appeal is submitted to the CKC within 10 days of the event on which the decision of the Rally Obedience Trial Committee was rendered. Such action may include barring the dog from future CKC approved events, imposition of an administrative fee, and/or cancellation of awards. The fact that the Rally Obedience Trial Committee did not sustain a protest in no way inhibits the right of the Discipline Committee to take such action, as it deems advisable.
- 15.4 An appeal to the Discipline Committee of the CKC from a decision of the Rally Obedience Trial Committee where a dog has been protested must be forwarded to the CKC within 10 days of the date on which the decision was rendered, together with a deposit.
- 15.5 If a trial-giving club fails to hear a protest as prescribed above, or in the opinion of the Discipline Committee improperly handles a protest, the Discipline Committee shall have the authority to take such action as it deems fit and necessary, and it may at the same time take disciplinary action against the officials of the trial-giving club concerned.

16 COMPLAINTS

- 16.1 A complaint against a person regarding a violation of the rules and regulations related to rally obedience trials must be in writing, on a form issued by the CKC (or facsimile thereof), and must be accompanied by a deposit. A deposit is not required on a complaint alleging that a judge officiating at a rally obedience trial held under these rules and regulations has been subject to indignities of any kind during the progress of the trial.
- 16.2 A complaint should be lodged with the Show Superintendent or Rally Obedience Trial Committee Chair of the trial-giving club no later than 15 minutes after the completion of judging of the trial, or should the complainant choose to do so, a complaint may be submitted directly to the CKC within 10 days of the trial. All such complaints shall constitute complaints under the CKC By-laws and the provisions of same shall apply.
- 16.3 Any complaint against the club holding the trial or any of its officials must be submitted directly to the CKC within 10 days of the trial. All such complaints shall constitute complaints under the CKC By-laws and the provisions of same shall apply.
- 16.4 A complaint shall be restricted to any of the following:
- (a) An act of omission or commission on which is based an allegation of a violation of the Rally Obedience Trial Rules & Regulations.
 - (b) Any act on which an allegation of misconduct is based.
 - (c) The alleged failure of an officiating judge to excuse or remove from competition a dog for which a provision for excusing or removal from competition appears in these rules and regulations.
- 16.5 Where the Trial Committee consists of more than 5 persons, the Show Superintendent or Rally Obedience Trial Committee Chair shall name 5 members to form a Trial Committee to act on complaints received by the trial-giving club.
- 16.6 When a complaint is received against a judge by the trial-giving club, the club will hold a hearing while all parties are still in attendance. The report and all statements given by all parties will be forwarded to the

Discipline Committee along with the deposit from the complainant. The Trial Committee will not render a decision but will collect all pertinent information.

- 16.7 Upon receipt of a complaint the Trial Committee of the trial-giving club shall conduct an investigation as soon as possible thereafter, but in any event, within 14 days of receipt, conduct a hearing in accordance with procedures set out in the Procedure for Conducting an Trial Committee hearing as provided in these regulations.
- 16.8 The Trial Committee shall promptly forward the complaint, the deposit and a record of the hearing together with its recommendation on the disposition of the complaint to the CKC. Copies of the record of the hearing and the Committee's recommendation will be forwarded to the parties concerned at the same time.
- 16.9 Notwithstanding any contrary provisions in these rules and regulations, the procedure specified herein for dealing with complaints shall govern.
- 16.10 Disciplinary action will be taken against any official and the trial-giving club of which he is an official when it is established to the satisfaction of the CKC that an attempt was made to discourage the submission of a complaint.
- 16.11 Disciplinary action will be taken against a trial-giving club which fails to properly deal with complaints as provided in these rules and regulations.

17 DISCIPLINE

- 17.1 The Discipline Committee may take disciplinary action against any club, person, partnership, company or organization for any act of omission or commission, which violates any section or sections of the rules and regulations for CKC rally obedience trials. Such action will be taken as provided for in the By-laws of the CKC.
- 17.2 No person shall abuse a dog on the grounds or premises of a trial or conduct themselves in a manner considered prejudicial to the best interests of the trial.

-
- 17.3 Any club, member, person, partnership, company or organization availing themselves of the privilege of participating in any capacity or manner whatsoever at a rally obedience trial shall, by such participation, be deemed to have agreed to the authority of the CKC and its Board as conferred on the CKC by its By-laws and all other rules and regulations adopted by the CKC.
- 17.4 At its discretion and subject to the appeal process, the Discipline Committee may cancel any or all qualifying scores earned by a dog owned by a person debarred, deprived, suspended or expelled of all privileges of the CKC when such wins were earned following the date on which such act occurred that resulted in disciplinary action.
- 17.5 The administration to a dog competing at a rally obedience trial of a drug or any substance, in any form, which alters the nervous system by stimulation, sedation or tranquilization shall be considered as misleading the judge and will be considered misconduct. The person or persons responsible will be subject to disciplinary action in accordance with this section.
- 17.6 Any person, either within or outside the judging ring, who does anything calculated to attract, distract or otherwise interfere in any way with the attention, deportment, or performance of a dog under judgement, may be disciplined by the Discipline Committee in whatever way it considers to be in the best interest of the club, or the judge may take summary action.
- 17.7 It shall be the duty and obligation of the trial-giving club to see that a judge, club official, ring steward, volunteer, or competitor at a rally Obedience Trial held under these regulations, is not subject to indignities of any kind. The Trial Committee Chair shall promptly report to the CKC any infringement of this regulation, and the Discipline Committee shall have the authority to take such action as it deems fit on receipt of a report indicating that this has occurred. A copy of this regulation shall be prominently placed in every premium list and catalogue.

18 PROCEDURE FOR CONDUCTING A RALLY TRIAL COMMITTEE HEARING

- 18.1 It is essential that the defendants be given the opportunity to be present during the whole hearing and to testify and present their own witnesses. If a defendant refuses to attend or defend himself, the hearing may proceed without him. In notifying the defendant of the hearing, it is essential that he be informed specifically of the nature of the charges against him and that a record of such notice be made.
- 18.2 The complainant must also be informed of the hearing and allowed to be present throughout the whole hearing.
- 18.3 Both the complainant and defendant should be informed that they may be represented by legal counsel or an agent at the hearing if they choose but this is not necessary.
- 18.4 The chair is to call the meeting to order and then announce: "We are proceeding by reason of our appointment to the Trial Committee by (name of trial-giving club)."
- 18.5 The chair shall identify all persons present and the reason for their presence (i.e. complainant, defendant, witness) and then ask the witnesses to withdraw until required to give evidence. After giving evidence a witness may be excused.
- 18.6 The complaint is to be read except that if the complainant and defendant agree, it may be necessary to relate only the substance of the complaint as set out on the Official Complaint form.
- 18.7 The chair is to ask the defendant whether he wishes to admit or deny the complaint as it has been read or stated.
- 18.8 The complainant is to give evidence on the complaint. The defendant then may question him. At the chair's invitation, any member of the Committee may question the complainant. If the complainant has brought witnesses, such witnesses may then give evidence individually. Each witness may be questioned by the defendant or any member of the Committee. Each witness is to leave the hearing after evidence has been given.

-
- 18.9 Upon completion of the evidence given by the complainant and any witnesses appearing on his behalf, the defendant may then give evidence and may then be questioned by the complainant or any member of the Committee. If the defendant has brought witnesses, such witnesses may then give evidence individually. Each witness may be questioned by the complainant or any member of the Committee.
- 18.10 The chair may then call any other witness, which the Committee considers appropriate to the proper hearing of the complaint.
- 18.11 The complainant may then have the opportunity of summing up the complaint and the evidence presented in support thereof. The defendant shall have the opportunity of summing up his own defense and any evidence presented in support of his own defense.
- 18.12 The Chair shall announce that the Committee will be submitting a report on the hearing together with its recommendation on the disposition of the complaint to the Discipline Committee of the CKC and the parties concerned. All but the Committee members shall be dismissed so that the matter may be considered.
-

19 PARTICIPATION

- 19.1 The participation in any manner or in any capacity at a competitive event held under these rules shall be considered a privilege accorded to any person by the CKC and such privilege may be extended and withdrawn by the Discipline Committee.
- 19.2 Any person availing himself of the privilege of participating in any manner, shape or form and in any capacity, including that of a spectator at a competitive event held under these rules shall, by such participation, be deemed to have agreed to the authority of the CKC and its Board.
- 19.3 No person who has been expelled, deprived of privileges, suspended or debarred by the CKC may enter a dog, compete, exhibit, judge, act as agent or handler for any competitor, take a dog into any competition or be connected in any capacity with competitive events held under these rules.
-

-
- 19.4 A club holding a rally obedience trial under these rules shall not engage in any capacity a person who is under suspension or expulsion, debarred or deprived of privileges by the CKC.
- 19.5 Any person who has lost the right to participate in events in their country of residence shall not, while such a loss of privilege is in effect, participate in any Canadian Kennel Club approved event. Any wins by a dog that is exhibited or handled by such individual shall automatically be canceled.
-

20 NO LIABILITY

- 20.1 The CKC shall not be responsible to any member, person, partnership, club or corporation for any loss, damage or injury arising at or by reason of any obedience trial held under any rules adopted by the CKC.
-

21 AMENDMENTS


- 21.1 These rules are subject to amendment by the Board.
- 21.2 Amendments to these rules may also be proposed by a person, association, club, representative group or body by presenting such proposal to the Board for its consideration. In such circumstances, the Board will forward the proposal to the Obedience Council for its consideration and input, prior to the Board making its final decision.
- 21.3 Any amendment to these rules shall be approved by a simple majority vote of the Board.
- 21.4 The effective date of any approved amendment shall be set by the Board.
- 21.5 The Board, at its sole discretion, may choose to perform a non-binding poll of the membership to attain general input prior to making a final decision on any proposed amendment to these rules.
-

21.6 Upon the Board making its final decision with respect to any amendment to these rules, the membership shall be advised by placing a notice in the Official Section as soon thereafter as is reasonably possible.

APPENDIX A

Rally Judges Book

Sample:



CANADIAN KENNEL CLUB **CLUB CANIN CANADIEN**

COMMERCE PARK, 49 SKYWAY AVENUE, SUITE 100, ETOBICOKE, ONTARIO M9W 6R4 TEL: (416) 675-5511 FAX: (416) 675-6506 WEB SITE: www.ckc.ca

RALLY OBEDIENCE JUDGE'S BOOK

Name of Club _____

Judge: _____

Date: _____

MAXIMUM SCORE – 100 POINTS

NOVICE A & B	ADVANCED A & B	EXCELLENT A & B
-------------------------	---------------------------	----------------------------

ARMBAND NO.	BREED	TIME	POINTS DEDUCTED	FINAL SCORE
101	Australian Shepherd	1:53:31	- 4	96
102	Italian Greyhound	Moved to	Advanced "A"	* NH
103	Schipperke	1:53:60	- 10	90
104	Pomeranian	1:36:29	- 6	94
105	Basset Hound	1:41:47	- 10	90
106	Pomeranian	1:31:17	- 2	98
107	Lhasa Apso	ABSENT	ABSENT	ABSENT
108	Whippet	Excused-lame	Excused-lame	Excused-lame
109	Pug	1:33:73	- 3	97
110	Spaniel (Irish Water)	1:36:75	- 5	95
111	Australian Shepherd	1:29:18	- 2	98 +
112	Shetland Sheepdog	1:30:57	- 1	99

1ST Place 112 2ND Place 111 3RD Place 106 4TH Place 109

Time Srated _____ Time Completed: _____

Judge's Signature

* Initials of Secretary

APPENDIX B

Rally Obedience Signs and Explanations

General Regulations

- Heeling is from sign to sign in a continuous performance. Heeling from sign to sign is judged. A minimum deduction will be one point.
- Handlers may praise and pet their dogs, repeating commands and signals if necessary.
- The Novice Class is performed on leash, using Exercises 1 -31. It consists of 10-15 exercises (not including Start and Finish), and uses a maximum of 5 stationary exercises.
- The Advanced class is performed off leash, using exercises 1-45. It consists of 12-17 exercises (not including Start and Finish), uses a maximum of 7 stationary exercises, and requires one jump.
- The Excellent class is performed off leash (except for the Honour), using exercises 1-50. It consists of 15-20 exercises (not including Start and Finish), a maximum of 7 stationary exercises, and requires two jumps (not consecutive).
- Exercises marked with an asterisk (*) may be used more than once on a Rally course.
- Scoring – Each team begins with 100 points. A qualifying performance is a score of 70 points or better, and all stations must be attempted.
- The performance is timed.

The following exercises may be used in Novice, Advanced and Excellent classes:

1. START

Indicates the beginning of the course.



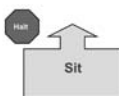
2. FINISH

Indicates the end of the course - timing stops.



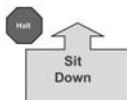
3. HALT - Sit

While heeling, the handler halts and the dog comes to a sit in heel position. The team then moves forward toward the next exercise sign (station), with the dog in heel position. **(Stationary exercise)**



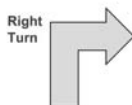
4. HALT - Sit - Down

While heeling, the handler halts and the dog comes to a sit in heel position. The handler then commands the dog to down, followed by the command to heel forward from the down position. **(Stationary exercise)**



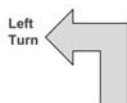
5. * Right Turn

Performed as a 90° turn to the right, as in traditional obedience.



6. * Left Turn

Performed as a 90° turn to the left, as in traditional obedience.



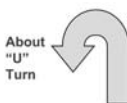
7. *About Turn - Right

While heeling, the team makes a 180° about turn to the handler's right.



8. * About "U" Turn

While heeling, the team makes a 180° about turn to the handler's left.



9. * 270° Right Turn

While heeling, the team makes a 270° turn to the handler's right. 270° turns are performed as a tight circle, but not around the exercise sign.



10. * 270° Left Turn

While heeling, the team makes a 270° turn to the handler's left. 270° turns are performed as a tight circle, but *not* around the exercise sign.



11. 360° Right Turn

While heeling, the team makes a 360° turn to the handler's right. 360° turns are performed as a tight circle, but not around the exercise sign.



12. 360° Left Turn

While heeling, the team makes a 360° turn to the handler's left. 360° turns are performed as a tight circle, but not around the exercise sign.



13. Call Front

Finish Right - Forward

While heeling, the handler stops forward motion and calls the dog to the front position (dog sits in front and faces the handler). The handler may take several steps backward as the dog turns and moves to sit in the front position. The second part of the exercise directs the handler to move forward while commanding the dog to change from the front position to the handler's right, around behind the handler and to heel position, as the handler continues forward. The dog does not sit before moving forward in heel position with the handler. **(Stationary exercise)**



14. Call Front

Finish Left - Forward

While heeling, the handler stops forward motion and calls the dog to the front position (dog sits in front and faces the handler). The handler may take several steps backward as the dog turns and moves to sit in the front position. The second part of the exercise directs the handler to move forward while commanding the dog to change from the front position to the handler's left and moving to heel position, as the handler continues forward. The dog does not sit before moving forward in heel position with the handler. **(Stationary exercise)**



15. Call Front

Finish Right - HALT

While heeling, the handler stops forward motion and calls the dog to the front position (dog sits in front and faces the handler). The handler may take several steps backward as the dog turns and moves to sit in the front position. The second part is the finish to the right, where the dog must return to heel position by moving around the right side of the handler. Dog must sit in heel position before moving forward with the handler. (**Stationary exercise**)



16. Call Front

Finish Left - HALT

While heeling, the handler stops forward motion and calls the dog to the front position (dog sits in front and faces the handler). The handler may take several steps backward as the dog turns and moves to a sit in the front position. The second part is the finish to the left, where the dog must move to the handler's left and sit in heel position. Dog must sit in heel position before moving forward in heel position with the handler. (Stationary exercise)



17. * Slow Pace

Dog and handler must slow down noticeably. This must be followed by a normal pace, unless it is the last station in the class.



18. * Fast Pace

Dog and handler must speed up noticeably. This must be followed by a normal pace, unless it is the last station in the class.



19. * Normal Pace

Dog and handler must move forward, walking briskly and naturally.



20. Moving Side Step Right

While heeling, the handler takes one step diagonally to the right and continues moving forward along the newly established line. The dog maintains heel position. The exercise may be performed just past the exercise sign.

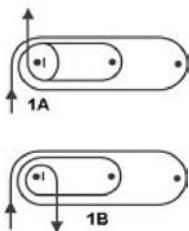


21. Spiral Right - Dog Outside

This exercise requires three pylons or posts placed in a straight line with spaces between them of approximately 6 - 8 feet. Spiral Right indicates the handler must turn to the right when moving around each pylon or post. This places the dog on the *outside* of the turns (See 1A and 1B). The exercise sign is placed near or on the first pylon or post where the spiral is started.



(The approach, spiral patterns and exit directions are illustrated on the course map with arrows indicating the path of the team.)

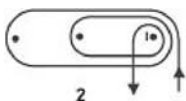


22. Spiral Left - Dog Inside

This exercise requires three pylons or posts placed in a straight line with spaces between them of approximately 6 - 8 feet. Spiral Left indicates that the handler must turn to the left when moving around each pylon or post. This places the dog on the *inside* of the turns (See 2). The exercise sign is placed near or on the first pylon or post where the spiral is started.

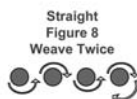


(The approach, spiral patterns and exit directions are illustrated on the course map with arrows indicating the path of the team.)



23. Straight Figure 8 - Weave Twice

This exercise requires four obstacles (pylons, posts or people) placed in a straight line with spaces between them of approximately 6 - 8 feet. The exercise sign is placed near or on the first obstacle where the exercise is started. Entry into the weaving pattern is with the first obstacle at the dog/handler's *left side*. The dog and handler circle the end obstacle and return, weaving once in each direction.



24. Serpentine - Weave Once

This exercise requires four obstacles (pylons, posts or people) placed in a straight line with spaces between them of approximately 6 - 8 feet. The exercise sign is placed near or on the first obstacle where the exercise is started. Entry into the weaving pattern is with the first obstacle at the dog/handler's *left side*. **NOTE:** In this exercise, the team does *not* return as they do in the Straight Figure 8 but weaves in one direction only.



25. HALT - 1, 2, 3 Steps Forward

The team halts with the dog sitting in heel position to begin the exercise. The handler takes one step forward, with the dog maintaining heel position, and halts. The dog sits when the handler halts. This is followed by two steps forward - halt, and three steps forward - halt, with the dog heeling each time the handler moves forward, and sitting each time the handler halts. **(Stationary exercise)**



26. Call Front

1, 2, 3 Steps Backward

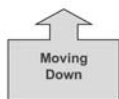
While heeling, the handler stops forward motion and calls the dog to the front position (dog sits in front and faces the handler). The handler may take several steps backward as the dog turns and moves to a sit in the front position. With the dog in the front position, the handler takes one step backward and halts. The dog moves with the handler and sits in the front position as the handler halts. This is followed by the handler taking two



steps backward and a halt, and three steps backward and a halt. Each time, the dog moves with the handler to the front position and sits as the handler halts. The handler then commands the dog to resume heel position as the team moves forward toward the next station. **(Stationary exercise)**

27. Moving Down - Forward

While moving with the dog in heel position, the handler commands the dog to drop to a down position, as the handler pauses next to the dog. Once the dog is completely in the down position, the handler moves forward commanding the dog to heel from the down position. **(Stationary exercise)**



28. HALT - Fast Forward From Sit

With the dog sitting in heel position, the handler commands the dog to heel and immediately moves forward at a fast pace. This must be followed by a normal pace, unless it is the last station in the class. **(Stationary exercise)**



29. Left About Turn

While moving with the dog in heel position, the handler makes an about turn to the left, while at the same time, the dog must move around the handler to the right and to heel position. The dog *does not sit* before moving forward in heel position with the handler.



30. HALT - Walk Around Dog

With the dog sitting in heel position, the handler commands the dog to stay, then proceeds to walk around the dog to the left, returning to heel position. The handler must pause in heel position before moving forward to the next station. **(Stationary exercise)**



31. HALT - Down

Walk Around Dog

With dog sitting in heel position, the handler commands the dog to down and to stay, then proceeds to walk around the dog to the left, returning to heel position. The handler must pause in heel position before moving forward to the next station. The dog heels forward from the down position. **(Stationary exercise)**

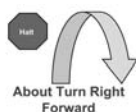


The following exercises may be used in Advanced and Excellent classes only:

32. HALT - About Turn Right

Forward

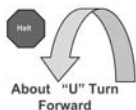
With the dog sitting in heel position, the team turns 180° to the right and immediately moves forward. (**Stationary exercise**)



33. HALT - About "U" Turn

Forward

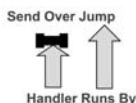
With the dog sitting in heel position, the team turns 180° to the left and immediately moves forward. (**Stationary exercise**)



34. * Send Over Jump

Handler Runs By

While moving with the dog in heel position, the handler directs the dog to take the jump, as the handler runs by the jump. When the dog has completed the jump, it is called to heel position and the team continues to the next exercise.



35. HALT - Turn Right One Step

Call to Heel - HALT

With the dog sitting in heel position, the handler commands the dog to wait or stay. The handler then turns to the right, while taking one step in that direction, and halts. The dog is called to sit in heel position in the new location before moving forward to the next station. (**Stationary exercise**)



36. HALT - Stand

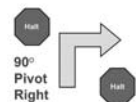
Walk Around Dog

With the dog sitting in heel position, the handler will stand the dog, command the dog to stay and walk around the dog to the left, returning to heel position. The handler must pause in heel position before moving forward to the next station. In the Advanced class, the handler may touch the dog, move forward to stand the dog, and may pose the dog as in the show ring. (**Stationary exercise**)



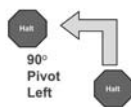
37. HALT - 90° Pivot Right - HALT

With the dog sitting in heel position, the handler commands the dog to heel and the team pivots 90° to the right and halts. The dog sits. The team then proceeds to the next station. (**Stationary exercise**)



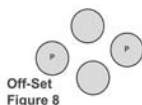
38. HALT - 90° Pivot Left - HALT

With the dog sitting in heel position, the handler commands the dog to heel and the team pivots 90° to the left and halts. The dog sits. The team then proceeds to the next station. **(Stationary exercise)**

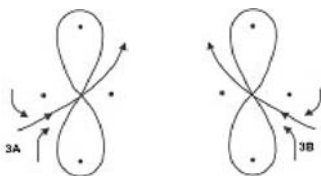


39. Offset Figure 8

This exercise requires two pylons, posts or people placed about 8 - 10 feet apart, around which the team will perform a complete Figure 8. Two distractions will be arranged to the sides of the Figure 8 about 5 - 6 feet apart. Entry may be between the pylons, posts or people and the distraction on either side (See 3A and 3B). The distractions will consist of two loosely covered, but secure, containers with tempting dog treats; however, dog toys may replace one or both containers, or may be placed next to the containers. Exercise sign may be placed on or near the cone where entry is made into the Offset Figure 8.

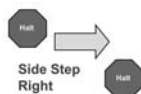


(Arrows will illustrate approaches, weaving pattern and exit of the team on the course map.)



40. HALT - Side Step Right - HALT

With the dog sitting in heel position, the team moves one step directly to the right and halts. The dog moves with the handler and sits in heel position when the handler halts. The exercise may be performed just past the exercise sign. **(Stationary exercise)**



41. HALT - Call Dog Front Finish Right

With the dog sitting in heel position, the handler calls the dog to front, and the dog sits in the front position facing the handler. On command, the dog then moves from the front position around the right of the handler and sits in heel position. Handler may ***NOT*** step forward or backward to aid dog during exercise. **(Stationary exercise)**



42. HALT - Call Dog Front

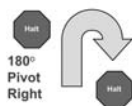
Finish Left

With the dog sitting in heel position, the handler calls the dog to front, and the dog sits in the front position facing the handler. On command, the dog then moves from the front position to the handler's left and sits in heel position. Handler may ***NOT*** step forward or backward to aid dog during exercise. **(Stationary exercise)**



43. HALT - 180° Pivot Right - HALT

With the dog sitting in heel position, the handler commands the dog to heel and the team pivots 180° to the right. The dog moves with the handler and sits in heel position. **(Stationary exercise)**



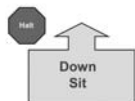
44. HALT - 180° Pivot Left - HALT

With the dog sitting in heel position, the handler commands the dog to heel and the team pivots 180° to the left. The dog moves with the handler and sits in heel position. **(Stationary exercise)**



45. HALT - Down - Sit

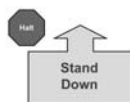
With dog sitting in heel position, the handler commands the dog to down, then to sit. **(Stationary exercise)**



The following exercises may be used in Excellent Classes only:

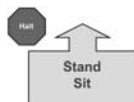
46. HALT - Stand - Down

With dog sitting in heel position, the handler will stand the dog (without physical handling), then commands the dog to down. The handler then commands the dog to heel forward from the down position. **(Stationary exercise)**



47. HALT - Stand - Sit

With dog sitting in heel position, the handler command the dog to stand without touching the dog, then command the dog to sit. **(Stationary exercise)**



48. Moving Stand Walk Around Dog

While heeling and with no hesitation, the handler will stand the dog, leave and walk around the dog to the left, returning to heel position. The handler must pause in heel position before moving forward to the next station. **(Stationary exercise)**



49. Back Up 3 steps Dog Stays in Position

While heeling, the handler reverses direction walking backward 3 steps, without first halting, then continues heeling forward. The dog moves backward with the handler and maintains position throughout the exercise without sitting.



50. Honor

This exercise will be performed on leash. Dog and handler will enter through the exit gate, or may proceed directly to the Honor Station after completing the Excellent Course. The judge will designate whether the dog is to perform a sit-stay or a down-stay, which shall be for the duration of time it takes for the next dog to run the entire course. The judge will, also, designate whether the handler will stand next to the dog or stand facing the dog during the Honor exercise. All dogs in the class will perform the exercise in the same manner. The Honor dog will be monitored and scored by a steward, as directed by the Judge.



The background is a solid orange color. It features several large, faint, circular logos of the Canadian Kennel Club (CKC). Each logo contains the letters 'CKC' in a stylized, intertwined font, with the words 'INCORPORATED' and 'FOUNDED 1888 FONDE' around it. There are also several large, stylized maple leaves scattered across the background.

THE CANADIAN KENNEL CLUB

Commerce Park
89 Skyway Avenue, Suite 100
Etobicoke, Ontario
M9W 6R4

Telephone (416) 675-5511

Fax (416) 675-6506

E-mail: information@ckc.ca

Web Site: www.ckc.ca